

Icemeater

Pulse Meter

Function

A self-contained battery powered unit designed for interface with water flow, electrical and gas meters where either a magnetic, optical or dry contact pulse output is available. Designed for easy retro-fitment to existing meter installations. Continual counting of pulses allows for remote billing and leak detection notifications.



Benefits

- Low cost
- Compact unit
- Easy installation
- Waterproof & environmentally sealed
- Portable monitoring unit
- Customisable period updates
- Accurate remote billing
- Exception alerts
- Tamper detection



Features:

- Cable cut and light sensitive Anti-Tamper Alert
- Anti-external jamming detect
- Transmit once per day or on Tamper Alarm
- Configurable and upgradeable via Near Field Communication (NFC) interface
- Optional application available to receive alerts (SMS, Email, Push Notifications) via smartphone or via web dashboard.

Programmable / Configurable Options:

- Transmit Frequency of Meter Reading
- Leak Detect Threshold

Optional Specifications:

- Sensor cable length
- Housing colour

Technical Specifications:

Battery

- Chemistry Li-MnO₂
- Size A
- Capacity – 2 800 mAh
- Expected Life – 10 Years
(Dependent on Transmission profile and environmental conditions)
- See technical specification for more detail

Dimensions

- Length 93 mm Excluding Mounting Tabs
(With Tabs 113 mm)
- Width 40 mm
- Height 31 mm
- Weight 200 grams
- Sensor Length 300 mm

Communications

- Sigfox
- Embedded antenna
- Class 0

Regions

- RCZ 1, 2, 3, 4
- USA
- Europe
- Africa
- Asia / Pacific
- Asia / Pacific Extended
(Japan & South Korea)

Certification

- Sigfox
- ICASA
- CE
- IP 69K

CONTACT US FOR MORE INFORMATION

Real Telematics

Tel: +27 (0) 31 702 2368

Email: sales@mcomm-rts.co.za

Website: www.realtelematics.com

Macrocomm Telecommunications

Tel: +27 (0) 10 493 6871

Email: edc@macrocomm.co.za

Website: www.macrocomm.co.za



Icemeater

Magnetic Pickup

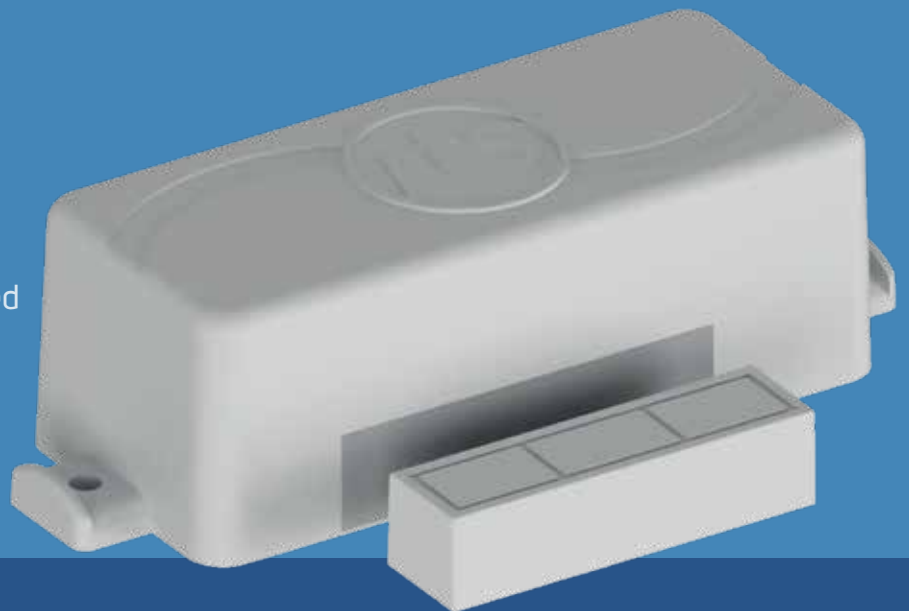
Function

A self-contained battery powered unit designed to detect the presence or absence of a nearby magnet. Potential security applications include monitoring door, gate or cabinet access. The unit can be used with standard burglar alarm magnets and is compatible with industrial magnets in rugged environments or where longer range is required. If the unit needs to be mounted remote to the sensor point use the IceMeter – Dry Contact, with cable input.



Benefits

- Low cost
- Compact unit
- Easy installation
- Waterproof & environmentally sealed
- Portable monitoring unit
- Customisable period updates
- Daily updates



Features:

- Transmit heartbeat once per day and on change of status
- Configurable and upgradeable via Near Field Communication (NFC) interface
- Optional application available to receive alerts (SMS, Email, Push Notifications) via smartphone or via web dashboard.

Programmable / Configurable Options:

- Transmit on magnet removed, magnet applied or both
- Adjustable alert delay time on magnet removed, magnet applied, or both
- Heartbeat frequency

Technical Specifications:

Battery

- Chemistry Li-MnO₂
- Size A
- Capacity – 2 800 mAh
- Expected Life – 10 Years
(Dependent on Transmission profile and environmental conditions)
- See technical specification for more detail

Dimensions

- Length 93 mm Excluding Mounting Tabs
(With Tabs 113 mm)
- Width 40 mm
- Height 31 mm
- Weight 200 grams

Communications

- Sigfox
- Embedded antenna
- Class 0

Regions

- RCZ 1, 2, 3, 4
- USA
- Europe
- Africa
- Asia / Pacific
- Asia / Pacific Extended
(Japan & South Korea)

Certification

- Sigfox
- ICASA
- CE
- IP 69K

CONTACT US FOR MORE INFORMATION

Real Telematics

Tel: +27 (0) 31 702 2368

Email: sales@mcomm-rts.co.za

Website: www.realtelematics.com

Macrocomm Telecommunications

Tel: +27 (0) 10 493 6871

Email: edc@macrocomm.co.za

Website: www.macrocomm.co.za



Icemeater

Power Protector

Function

This unit is designed to monitor power status and provide alerts on failures. The unit's potential applications include cold-chain power monitoring for perishable goods, sensitive electronic equipment, server / computer room monitoring, critical equipment monitoring for hospitals and nursing homes and power critical infrastructure monitoring.



Benefits

- Low cost
- Compact unit
- Easy installation
- Waterproof & environmentally sealed
- Portable monitoring unit
- Customisable period updates
- Error & fault alerts



Features:

- Transmit heartbeat once per day and on change of status
- Configurable and upgradeable via Near Field Communication (NFC) interface
- Optional application available to receive alerts (SMS, Email, Push Notifications) via smartphone or via web dashboard.

Optional Specifications:

- Power supply input type
- Housing colour
- USB cable length

Programmable / Configurable Options:

- Transmit on heartbeat frequency
- Alert on Power Fail, Power Restore or both
- Adjustable Alert Delay Time on Power Fail, Power Restore or both

Technical Specifications:

DC – Supply Adaptor

- 4 - 5 VDC (ordered separately)

Dimensions

- Length 93 mm Excluding Mounting Tabs
(With Tabs 113 mm)
- Width 40 mm
- Height 31 mm
- Weight 50 grams
- USB cable length 450 mm (USB power version)

Communications

- Sigfox
- Embedded antenna
- Class 0

Regions

- RCZ 1, 2, 3, 4
- USA
- Europe
- Africa
- Asia / Pacific
- Asia / Pacific Extended
(Japan & South Korea)

Certification

- Sigfox
- ICASA
- CE
- IP 69K

CONTACT US FOR MORE INFORMATION

Real Telematics

Tel: +27 (0) 31 702 2368

Email: sales@mcomm-rts.co.za

Website: www.realtelematics.com

Macrocomm Telecommunications

Tel: +27 (0) 10 493 6871

Email: edc@macrocomm.co.za

Website: www.macrocomm.co.za



Iceter

Temperature Alert

Function

This self-contained, battery powered unit is designed for accurate temperature monitoring to within 1°C for a temperature range between -30°C and 100°C. Ideal for temperature critical applications such as cold-chain management, server room and laboratory / technical environments and more.



Benefits

- Low cost
- Compact unit
- Easy installation
- Waterproof & environmentally sealed
- Portable monitoring unit
- Fixed interval updates



Features:

- Transmit on temperature out of bounds
- Transmit on fixed interval
- Configurable and upgradeable via Near Field Communication (NFC) interface
- Optional application available to receive alerts (SMS, Email, Push Notifications) via smartphone or via web dashboard.

Programmable / Configurable Options:

- Upper and lower alarm levels as well as reset levels
- Maximum transmission interval

Technical Specifications:

Battery

- Chemistry Li-MnO₂
- Size A
- Capacity – 2 800 mAh
- Expected Life – 10 Years
(Dependent on Transmission profile and environmental conditions)
- See technical specification for more detail

Dimensions

- Length 93 mm Excluding Mounting Tabs
(With Tabs 113 mm)
- Width 40 mm
- Height 31 mm
- Weight 200 grams

Communications

- Sigfox
- Embedded antenna
- Class 0

Optional Specifications:

- Sensor cable length
- Housing colour
- Remote sensor

Regions

- RCZ 1, 2, 3, 4
- USA
- Europe
- Africa
- Asia / Pacific
- Asia / Pacific Extended
(Japan & South Korea)

Certification

- Sigfox
- ICASA
- CE
- IP 69K

CONTACT US FOR MORE INFORMATION

Real Telematics

Tel: +27 (0) 31 702 2368

Email: sales@mcomm-rts.co.za

Website: www.realtelematics.com

Macrocomm Telecommunications

Tel: +27 (0) 10 493 6871

Email: edc@macrocomm.co.za

Website: www.macrocomm.co.za



Icemeater

Water Detect

Function

This self-contained battery powered unit detects the presence or absence of water for leak, flood detection, water level measurement and monitoring purposes.

Potential applications include:

- Geyser leak and kitchen, bathroom or basement flooding detection
- Water level in tanks or other water storage containers
- Water level in animal drinking troughs
- General flood alerting

Benefits

- Low cost
- Compact unit
- Easy installation
- Waterproof & environmentally sealed
- Portable monitoring unit
- Daily updates



Features:

- Transmit heartbeat once per day and on change of status
- Configurable and upgradeable via Near Field Communication (NFC) interface
- Optional application available to receive alerts (SMS, Email, Push Notifications) via smartphone or via Web dashboard.

Programmable / Configurable Options:

- Transmit on Water Detect, No Water Present or both
- Heartbeat frequency
- Detection sensitivity

Technical Specifications:

Battery

- Chemistry Li-MnO₂
- Size A
- Capacity – 2 800 mAh
- Expected Life – 10 Years
(Dependent on Transmission profile and environmental conditions)
- See technical specification for more detail

Dimensions

- Length 93 mm Excluding Mounting Tabs
(With Tabs 113 mm)
- Width 40 mm
- Height 31 mm
- Weight 200 grams

Communications

- Sigfox
- Embedded antenna
- Class 0

Regions

- RCZ 1, 2, 3, 4
- USA
- Europe
- Africa
- Asia / Pacific
- Asia / Pacific Extended
(Japan & South Korea)

Certification

- Sigfox
- ICASA
- CE
- IP 69K

CONTACT US FOR MORE INFORMATION

Real Telematics

Tel: +27 (0) 31 702 2368

Email: sales@mcomm-rtS.co.za

Website: www.realtelematics.com

Macrocomm Telecommunications

Tel: +27 (0) 10 493 6871

Email: edc@macrocomm.co.za

Website: www.macrocomm.co.za



Icemeater

Dry Contact

Function

The ICE Dry Contact unit is used to interface with external sensors or signals and send alerts on predefined conditions. The sensor cable means the unit can be located remotely to the signal source. Potential applications include interfaces with magnetic or mechanical relays, switch contacts, level sensors, industrial equipment providing a 0 – 10V or 4 – 20mA signal or NTC Temperature sensor. It can be used as a commercial product or as a certified unit to rapidly develop proof of concept applications.



Benefits

- Low cost
- Compact unit
- Easy installation
- Waterproof & environmentally sealed
- Portable monitoring unit
- Customisable period updates
- Two digital (level or pulse) and one analog input



Features:

- Transmit heartbeat once per day and on change of status
- Configurable and upgradeable via Near Field Communication (NFC) interface
- Optional application available to receive alerts (SMS, Email, Push Notifications) via smartphone or on web dashboard

Programmable / Configurable Options:

- The unit comes in several application profiles which can be customised for specific use cases
- Heartbeat frequency
- Alarm conditions such as rising or falling pulses, digital level high or low, analog thresholds or percentage change in analog.

Technical Specifications:

Battery

- Chemistry Li-MnO₂
- Size A
- Capacity – 2 800 mAh
- Expected Life – 10 Years
(Dependent on Transmission profile and environmental conditions)
- See technical specification for more detail

Dimensions

- Length 93 mm Excluding Mounting Tabs
(With Tabs 113 mm)
- Width 40 mm
- Height 31 mm
- Weight 200 grams
- Cable Length 450mm

Communications

- Sigfox
- Embedded antenna
- Class 0

Optional Specifications:

- Sensor cable length
- Housing colour

Regions

- RCZ 1, 2, 3, 4
- USA
- Europe
- Africa
- Asia / Pacific
- Asia / Pacific Extended
(Japan & South Korea)

Certification

- Sigfox
- ICASA
- CE
- IP 69K

CONTACT US FOR MORE INFORMATION

Real Telematics

Tel: +27 (0) 31 702 2368

Email: sales@mcomm-rtS.co.za

Website: www.realtelematics.com

Macrocomm Telecommunications

Tel: +27 (0) 10 493 6871

Email: edc@macrocomm.co.za

Website: www.macrocomm.co.za

